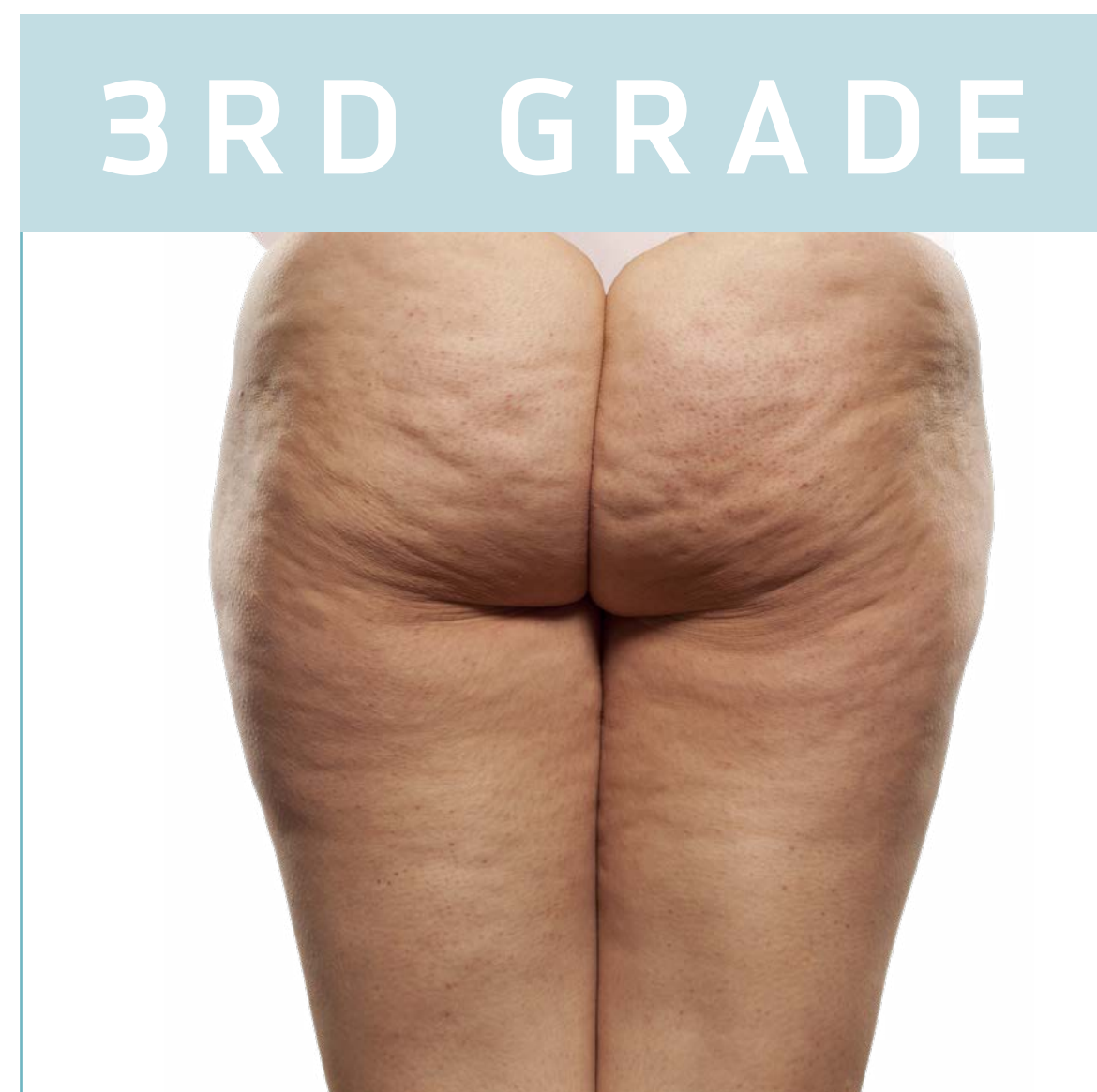
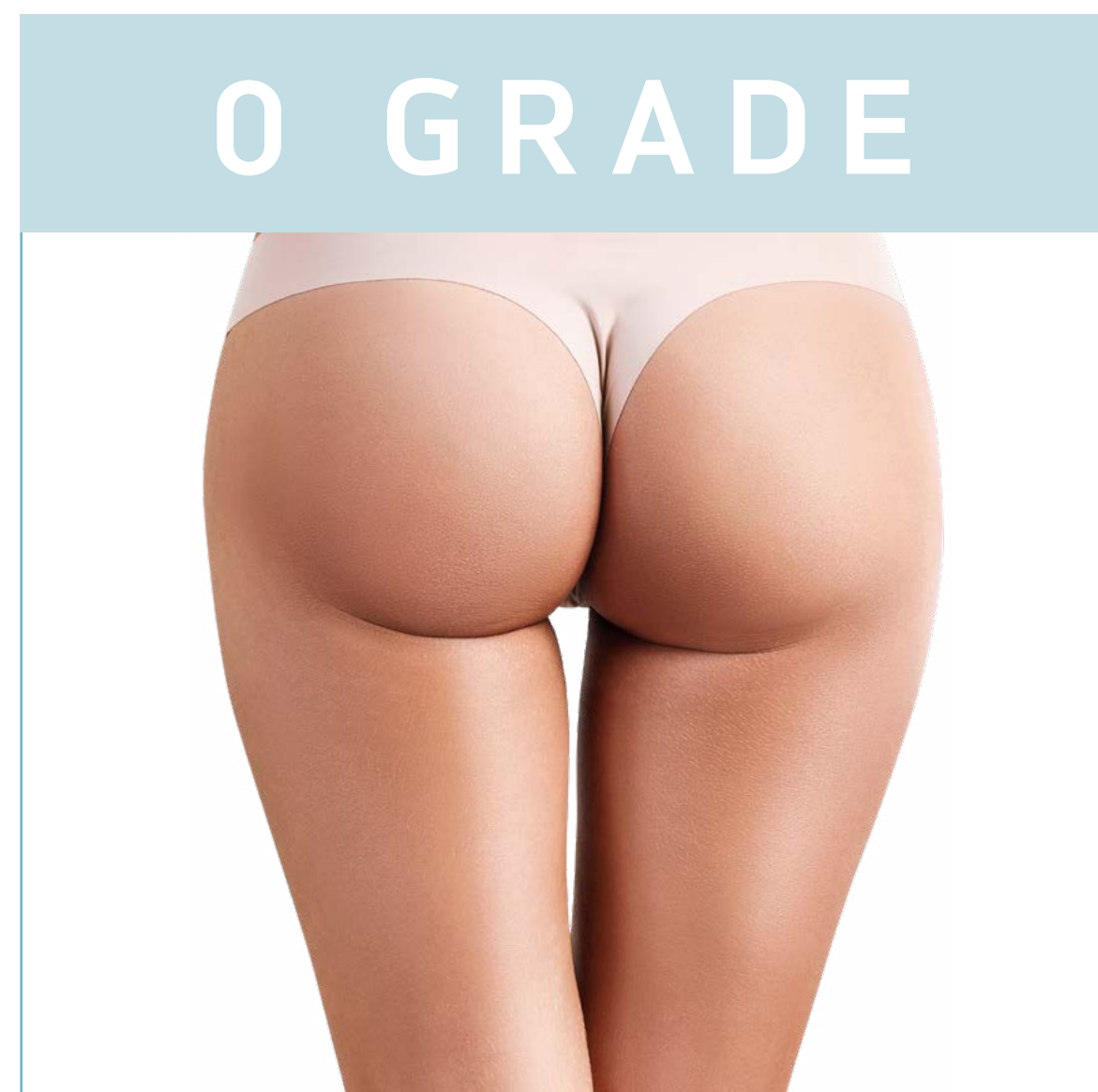
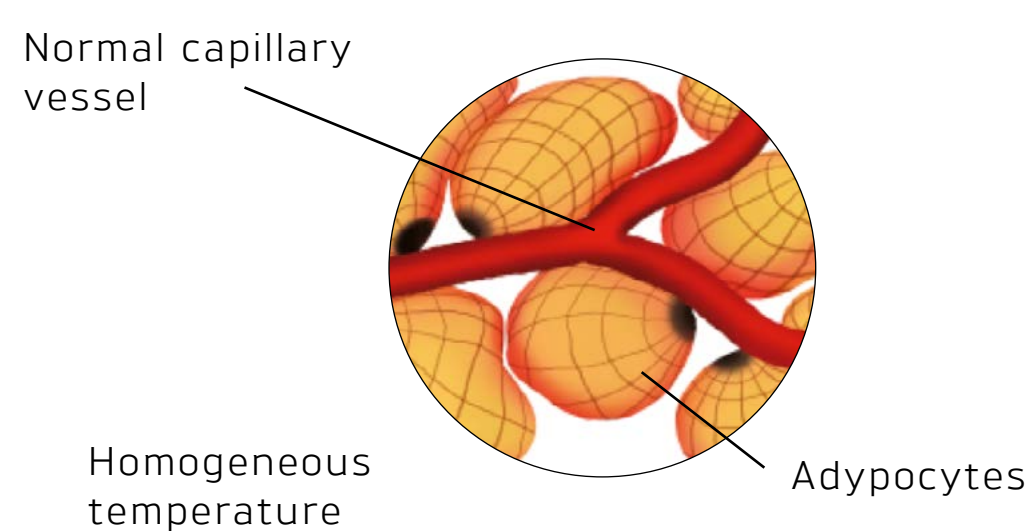


CELLULITE GRADING GUIDE

Cellulite is a dysfunction unable to be solved spontaneously



Description



- Lymphatic and blood vessels work well
- No water retention
- Good cellular oxygenation

MICROCIRCULATION IN GOOD CONDITION

When Appears

- Very young woman
- Woman with android physiology

Thermography Analysis



Uniform image -> Absence of cellulite

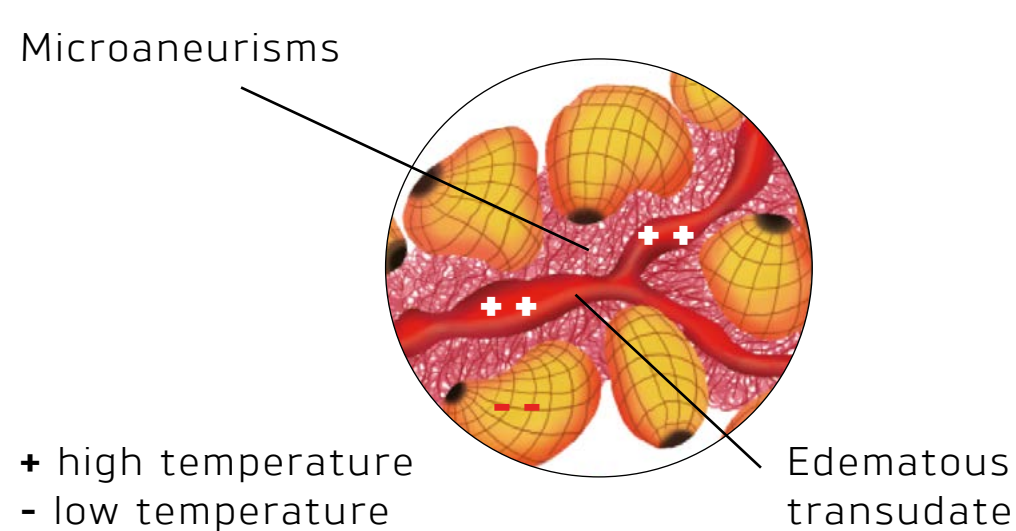
Visual Analysis

- Tissue in good condition

Tactile Analysis

- The pinch test reveals:
- "Folds and furrows"
 - No mattress-like appearance

Description



- + high temperature
 - low temperature
 - Major viscosity of the interstitial fluids
 - Multiplication and growth of adipocytes
 - Tissue Edema
- MICROCIRCULATORY ALTERATIONS**
OBSTRUCTED BLOOD VESSELS

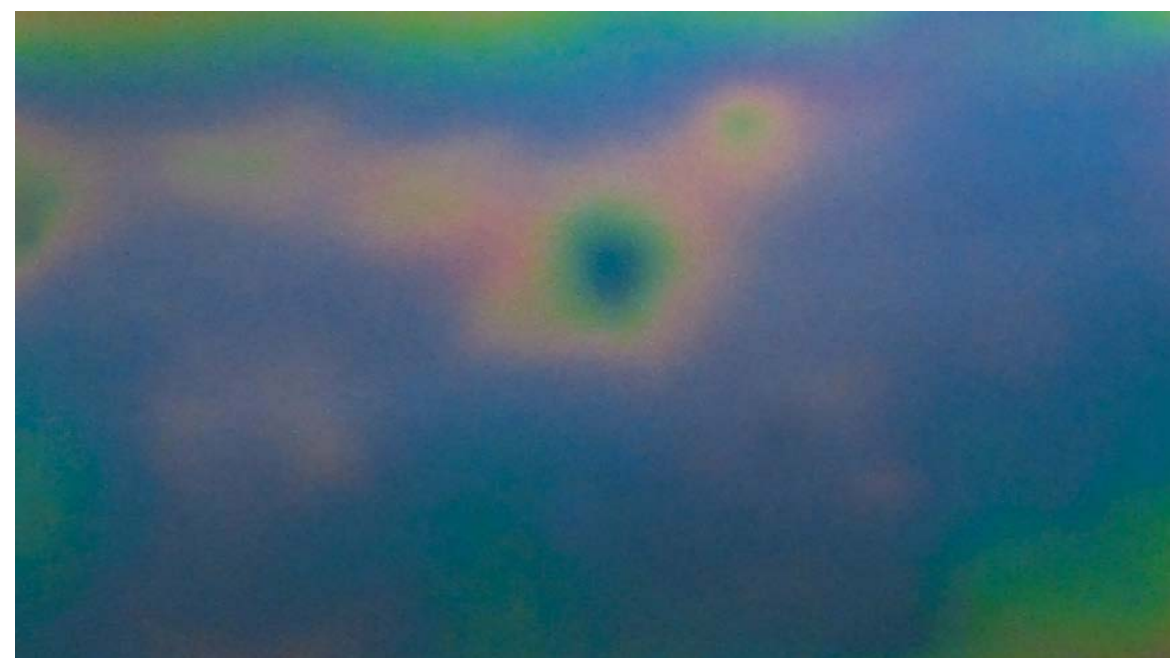
When Appears

- Approx. 20-30 years
- Sedentary lifestyle
- Incorrect nutrition

Where Appears

- Hips
- Outside surface of the thighs (coulottes de cheval)
- Ankles and calves
- Buttocks
- Inside of the knee
- Arms

Thermography Analysis



Hyperthermal patches with blurred edges (presence of blood stasis) surrounded by cooler haloes (reduced blood supply).
Mottled image -> oedematous cellulite

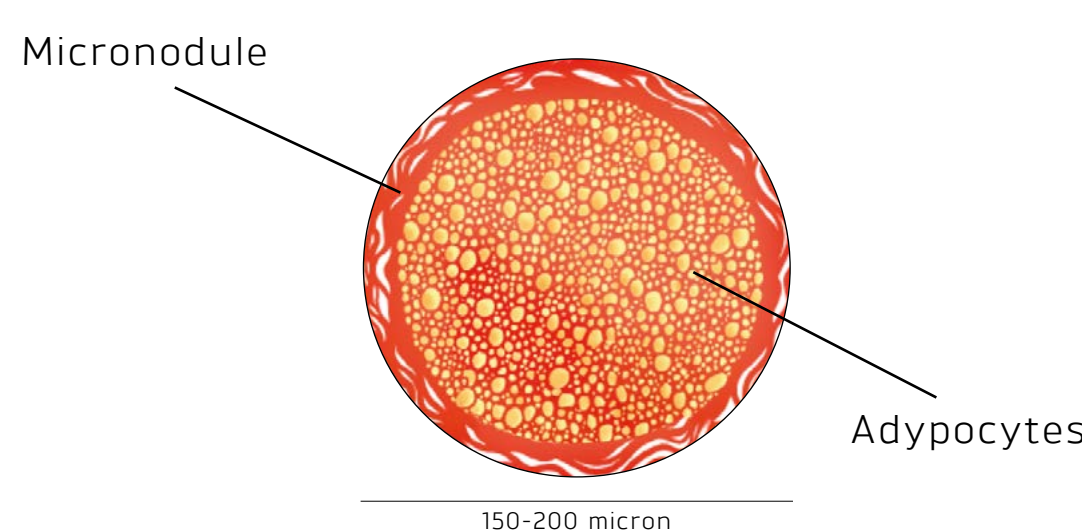
Visual Analysis

- Soft and dry skin
- Swelling tissue, oedematous tissue
- Soft dischromia
- Woman with android physiology
- No dimpling when the person is standing

Tactile Analysis

- The pinch test reveals:
- Soft mattress-like appearance
 - Slight pain
 - Hypothermia

Description



- Defensive reaction of the fibrils which grow thicker and surround the blood vessels (capillary strangulation)
- FORMATION OF THE FIRST MICRONODULES
- HARDENING OF DERMIS CONNECTIVE TISSUE

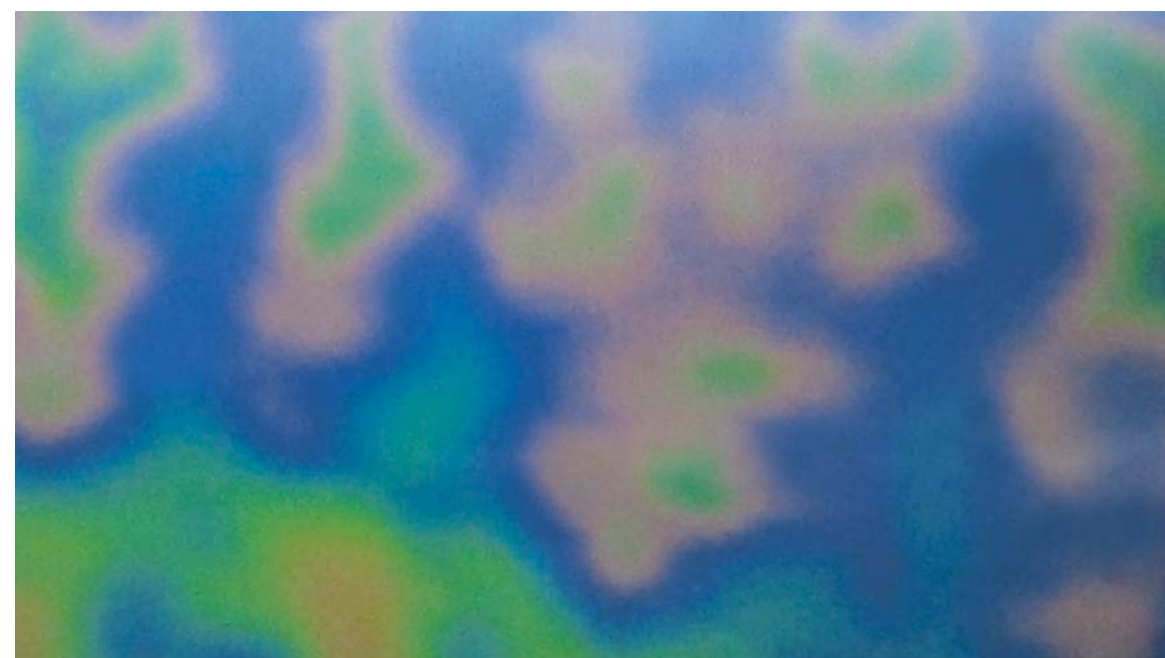
When Appears

- Approx. 30-45 years
- Sedentary lifestyle
- Incorrect nutrition

Where Appears

- Outside surface of the thighs (coulottes de cheval)
- Buttocks
- Ankles
- Inside of the knee
- Arms

Thermography Analysis



Numerous hyperthermal patches (blood stasis) with sharp edges, distributed irregularly in a generally cold area (micronodules).
Leopard skin image -> fibrous cellulite (micronodules)

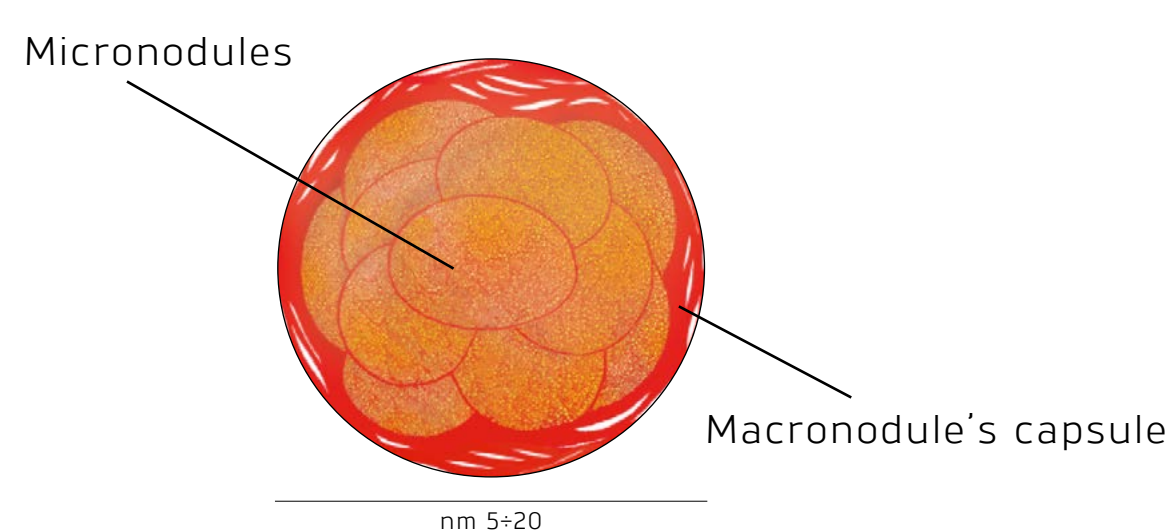
Visual Analysis

- Spontaneous dimpling (Mattress-like appearance) when the person is standing, but it is no longer visible when lying down
- Dry skin

Tactile Analysis

- The pinch test reveals:
- Mattress-like appearance
 - Micronodules
 - Pain
 - Cold skin temperature where blemish is present
 - Cold feet

Description



- The fusion of several micronodules generates the macronodule
- Increase of dermal tension
- CUTANEOUS AGEING
- FORMATION OF MACRONODULES

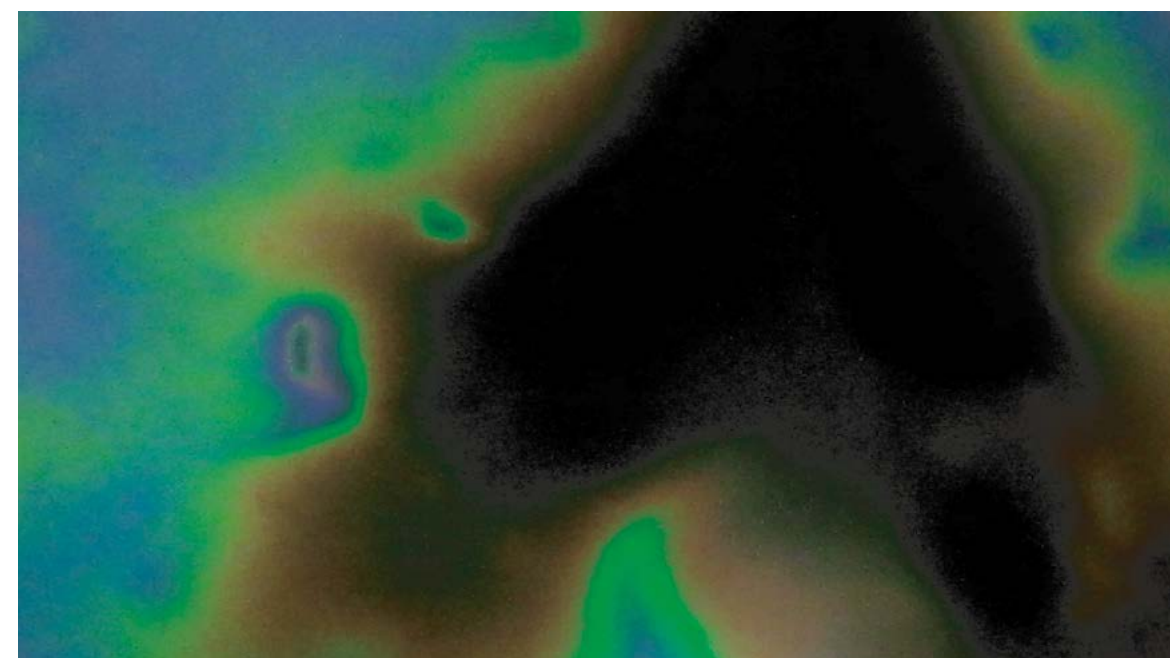
When Appears

- Approx. 45 years + onwards
- Sedentary lifestyle
- Too rapid loss of weight
- Incorrect nutrition

Where Appears

- Ankle and calves
- Thighs, internal thighs
- Buttocks
- Arms
- Abdomen
- Back

Thermography Analysis



Black or brown surfaces (hypothermic- macronodules) adjacent to hyperthermal patches of various size (venular-venous stasis).
Black holes thermographic image -> sclerotic cellulite (macronodules)

Visual Analysis

- Spontaneous dimpling (Mattress-like appearance) when the person is standing and lying
- Sagging tissue
- Purplish color

Tactile Analysis

- The pinch test reveals:
- Hypothermia
 - Pain
 - Cold feet
 - Thick skin
 - Areas with empty tissue