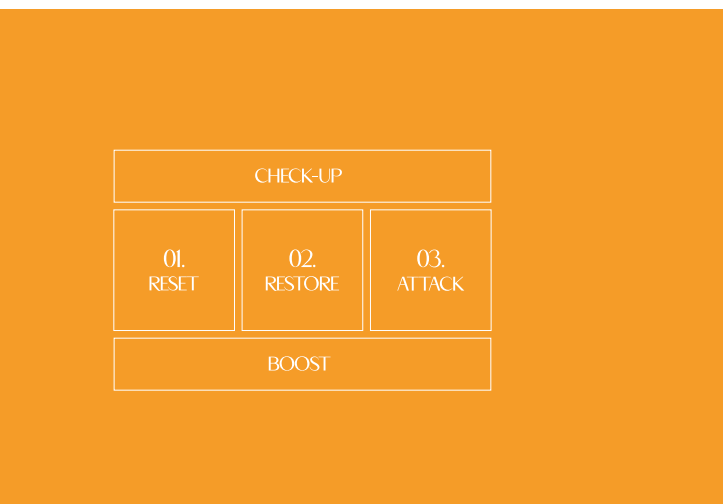




WE CARE FOR YOU

CATALOGUE
2025



AROSHA

BRAND

Arosha is an Italian brand based in Bergamo, where facial and body beauty solutions are designed and manufactured in a sustainable location with careful use of renewable resources.

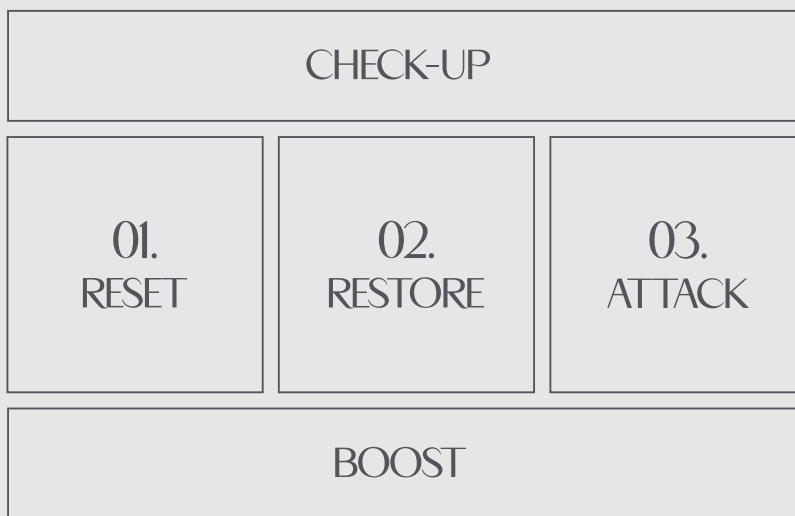
Operating in the field of professional cosmetics, Arosha promotes the diffusion of a culture centred on taking care of oneself and one's well-being, defining a new and personalised standard of beauty.

Based on a unique and distinctive method, Arosha is committed to offering all beauty specialists worldwide a map to achieve their goals with proven and measurable results.



AROSHA

METHOD



Combining science and technology, Arosha has developed a professional, unique and distinctive method: RESET, RESTORE and ATTACK constantly supported by CHECK UP and BOOST. A three-phase strategy, for face and body essential to give oriented results through synergistic actions.

CHECK-UP

Important preparatory action always performed before a treatment. The customer is guided and supported during the whole programme by means of a PERSONALIZED ANALYSIS and continuous MONITORING of the PROGRESS to assure results.

01. RESET

It is the FIRST PHASE essential to OXYGENATE, DETOXIFY and thoroughly PURIFY the skin, thus preparing it to better absorb the functional substances of subsequent treatments.

02. RESTORE

The SECOND PHASE is designed to REBALANCE and RESTORE the skin barrier. The beauty of the skin passes through its health: in fact, alterations to the permeability of the tissues and chronic edema create an imbalance which, if neglected, leads to the development of cellulite and localized adiposity.

03. ATTACK

It is the THIRD and final PHASE which involves the treatment of each specific imperfection: thoroughly purified, detoxified and "reactivated", the skin is ready to receive actions aimed at REDUCING the imperfections present in order to obtain the desired result.

BOOST

It is the important synergistic action that supports the method thanks to a wide choice of HOME TREATMENTS. An extra charge to achieve the desired results and maintain the effects of the professional treatments performed in the cabin.

SUMMARY

BODY

CHECK-UP

CLIENT DATA SHEET	7
BODY MEASURE SYSTEM	
GRADUATED BACKGROUND	
CELLULITE DETECTOR THERMOGRAPHY KIT	8
ADIPOSITY DETECTOR THERMOGRAPHY KIT	
CELLULITE GRADING GUIDE	9
LOCALIZED ABDOMINAL ADIPOSITY GRADING GUIDE	
WHITE DIGITAL SCALE	

RESET

.100 DETOXY	10
.104 DETOXY PLUS CREAM	
.105 SUGARGEL SCRUB PLUS	
.106 GLYCOLIC ACID	

RESTORE

.200 NIO DRAIN+	11
.204 NIO DRAIN PLUS	
.203 NIO AQUADRAIN	

ATTACK

.320 LIPOFIT	13
.325 LIPOLYTIC PLUS	
.330 FIBROCEL+	
.307 CELLULITE PLUS	
.306 CEL TERM	
.334 LIPO REDUCE	
.340 ACTIVE UP	14
.345 TONING PLUS	
.316 CRIO TONIC	
.343 UP&TONE	

BOOST

BRUSH WITH HANDLE	16
.510 PEELING	
.517 SUGARGEL SCRUB	
.500 PRESSOPANTS	
.501 NIO DRAIN	
.502 NIO DRAIN BIO SHOCK	
.520 NIO DRAIN PANTS	17
.503 BODYSLIM	
.504 LIPOLYTIC	
LIPO BIO SHOCK	
.508 CELL REPAIR	
.515 CELLULITE	
.516 CELLUNIGHT	18
.521 SILHOUETTE PANTS	
.509 BODY LIFT	
.511 STRETCH MARKS	
.513 BREAST & DÉCOLLETÉ	
.514 TEXTURE	
.518 B-TONE	19
.522 UP&TONE PANTS	

TOOLS

BODY BRUSH	20
APPLICATION SET	
CARTENE PANTS MONO USE	
CARTENE ROLL MONO USE	
CARTENE TOTAL BODY MONO USE	
BODY TOWEL	

FACE

CHECK-UP

CLIENT DATA SHEET	23
FACE SKIN ANALYSIS POSTER	

RESET

MANDELIC ACID 30% & POST PEEL NEUTRALIZER	23
LACTIC ACID 30% & POST PEEL NEUTRALIZER	
GLYCOLIC ACID 35% & POST PEEL NEUTRALIZER	
WHITENING PEEL COMPLEX & POST PEEL NEUTRALIZER	
.150 PURITY	24
.153 CLEANSING CREAM	
.154 TONIC LOTION	
.155 PURE CLEANSE PRIMER	
.158 PURIFY BC MASK	

RESTORE

.250 RE-HYDRA	25
.254 EXTRA NOURISHING RICH	
.255 EXTRA NOURISHING LIGHT	
.256 REGENERIST	
.259 RESTORE PRO-BIOTIC BC MASK	

ATTACK

.350 X-AGE SUPREME	26
.350 X-AGE SUPREME PREMIUM	
.353 X-AGE SUPREME BC MASK	
.354 X-AGE SUPREME CREAM	

BOOST

.700 B-CLEAN	28
.701 SKIN AFFINITY	
.708 PURIFY MASK	
.702 HYDRA ESSENCE	
.703 HYDRA SERUM	
.704 HYDRA CREAM	
.705 EXTRA NOURISHING TEXTURE RICH	29
.706 EXTRA NOURISHING TEXTURE LIGHT	
RESTORE KIT	
.709 RESTORE PROBIOTIC MASK	
.711 HYDRALIPID INFUSION	
.712 REVITAL GLOW MASK	
.713 X-AGE SUPREME MASK	30
.714 X-AGE SUPREME RICH SERUM	
.715 X-AGE SUPREME RICH CREAM	
.716 X-AGE SUPREME RICH CREAM NIGHT	
.717 AGE XTREME LIGHT SERUM	
.718 X-AGE SUPREME LIGHT CREAM	
.719 X-AGE SUPREME LIGHT CREAM NIGHT	31
VITAMINIC INFUSION	
EYE PATCH	
EYE DUO PACK	
.707 SUN MIST SPF 50+	

TOOLS

CERAMIC BOWL	32
FACE BRUSH	
PEELING BRUSH	
FACE TOWEL	
AROSHA BAND IN TECH FABRIC	
AROSHA HAIR BAND	

TECH

TECH / BODY

LX9	35
MK300	36
WAVESHAPE 3.0	37
THERMO SLIM BLANKET	

TECH / FACE

DERMAX	38
--------------	----



BODY





CLIENT DATA SHEET

Collect all customer data during the treatment steps and highlight the results.

SPECIFICATIONS:

A4 format

Cod. ART001086



BODY MEASURE SYSTEM

Portable measurement system

The Body Measure System is the tool which allows you to easily measure arm, leg and gluteal circumference to easily check the progress of the Arosha treatments. Thanks to the high sliding measuring arm along a graduated scale, it allows you to refine the exact point of a previously taken measurement and so to verify the progress at the same position.

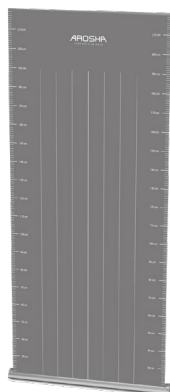
INFO:

- Portable tool
- Easy to disassemble and assemble
- Precise reading of the measures
- Graduated height scale

FEATURES:

- Dual measurement system in cm and inches
- Graduated reading scale height from 14 to 150 cm
- Metal silk-screened structure, portable
- Dimensions in mm: (W) 400 x (L) 350 x (H) 1550
- Weight: approximately 7,5 kg

Cod. ARO900012



GRADUATED BACKGROUND

Practical photographic backdrop designed to create the best and most precise "before" and "after" photographs.

SPECIFICATIONS:

100x200 cm

Cod. ART001205



CELLULITE DETECTOR THERMOGRAPHY KIT

Contact thermography encapsulated liquid crystal

Cellulite detector is a contact thermography system protected by an international patent which allows to detect and classify the thermal signs of cellulite, to localize treatment areas which require greater attention and propose to a client all treatment possibilities.

INFO:

- 1 Cold plate gradient from 27.3 to 32.1 C°
- 1 Hot plate gradient from 30.3 to 35.1 C°
- Resealable rigid packaging
- User Manual
- Ambient Thermometer

ADVANTAGES:

- Immediate cellulite identification
- Easy and localized classification
- Monitoring developments

FEATURES:

- Liquid crystal display microencapsulated
- Flexible PVC Support
- Dimensions of each band: (L) 235 x (H) 140 mm
- Display size: (L) 135 x (H) 110 mm
- Special photographable display

Cod. ARO900014



ADIPOSIY DETECTOR THERMOGRAPHY KIT

Contact thermography encapsulated liquid crystal

The Adiposity Detector is a contact thermography system, protected by an international patent, which allows to detect and classify the presence of adiposity. It is recommended to always use the relative grading poster to support the evaluation.

INFO:

- 1 Cold plate gradient from 27.3 to 32.1 C°
- 1 Hot plate gradient from 30.3 to 35.1 C°
- Resealable rigid packaging
- User Manual
- Ambient Thermometer

ADVANTAGES:

- Immediate adiposity identification
- Easy and localized classification
- Monitoring developments

FEATURES:

- Liquid crystal display microencapsulated
- Flexible PVC Support
- Dimensions of each band: (L) 235 x (H) 140 mm
- Display size: (L) 135 x (H) 110 mm
- Special photographable display

Cod. ARO900020



CELLULITE GRADING GUIDE

Poster

The guide allows you to recognize and analyze cellulite through a visual and tactile evaluation.

ADVANTAGES:

- First step to identify the degree of cellulite

SPECIFICATIONS:

100x70 cm

Cod. ART001237



LOCALIZED ABDOMINAL ADIPOSITY GRADING GUIDE

Poster

The guide allows you to recognize and analyze abdominal localized adiposity through a visual and tactile evaluation.

ADVANTAGES:

- First step to identify the degree of localized abdominal adiposity

SPECIFICATIONS:

100x70 cm

Cod. ART001238



WHITE DIGITAL SCALE

BC730 TANITA

The Tanita balance is super compact and lightweight and uses the latest Tanita DualFrequency Bio-electrical Impedance Analysis (BIA) technology to ensure the highest level of accuracy, enabling you to instantly see the impact of your fitness or weight loss programme.

INFO:

- Two Tier Display
- 5 User Memories
- Compact Design

FEATURES:

- Weighing Capacity: 150 kg
- Weight Increments: 100 g

FUNCTIONS:

- Auto Recognition
- Recall Function
- Clock, Calendar
- Guest Mode
- Athlete Mode
- Weight
- Body Fat %
- Total Body Water %
- Muscle Mass
- Physique Rating
- Bone Mineral Mass
- Basal Metabolic Rate
- Metabolic Age
- Visceral Fat

- Dimensions: (L) 220 x (W) 260 x (H) 40 mm
- Weight: 0,9 kg

Cod. ARO900013



.100 DETOXY

Total body detoxifying and
oxygenating program

☀️ warm-cold effect

Total body professional treatment of the first RESET phase of Arosha method that exfoliates the epidermis, stimulates skin microcirculation and oxygenates the tissues, making the skin smooth, luminous and ready to receive RESTORE and ATTACK treatments.

SPECIFICATIONS:

4 treatments

Cod. ARO101009



.104 DETOXY PLUS CREAM

Intensive detoxifying cream

Rich professional massage cream with a detoxifying action. Thanks to the exclusive CELL DETOXY SYSTEM which removes impurities from the epidermis and optimizes normal skin functions.

SPECIFICATIONS:

500 ml

Cod. ARO201107



.105 SUGARGEL SCRUB PLUS

Exfoliating lipogel
with cane sugar

Body Lipogel with an enveloping texture that combines the exfoliating power of brown sugar crystals with the precious sweet almond and rice oils. It promotes physiological skin turnover, smoothes the skin purifying and freeing it from impurities.

SPECIFICATION:

500 ml

Cod. ARO201109



.106 GLYCOLIC ACID

Peeling

Professional spray peeling with an important keratolytic and exfoliating action. Fundamental to prepare the skin for subsequent treatments.

SPECIFICATION:

120 ml

Cod. ARO201110



**.200
NIO DRAIN+**
Intensive draining
programme

Professional treatment of the second RESTORE phase of the Arosha method specially designed to stimulate the skin microcirculation and help the lymphatic system to drain toxins and excess fluids responsible for water retention, swelling and oedematous cellulite.

SPECIFICATIONS:
4 treatments

Cod. ARO101010



**.204
NIO DRAIN PLUS**
Intensive draining
gel cream

Rich massage cream formulated with specific active ingredients with draining and vasotonic properties that help improve microcirculation and promote the drainage of excess fluids. Thanks to NIOCONTROL™ technology, an innovative delivery system based on Niosomes, it makes the functional principles contained better and gradually available, for an optimal result.

SPECIFICATIONS:
500 ml

Cod. ARO201108



**.203
NIO AQUADRAIN**
Intensive draining bandage

Cosmetic treatment with important draining properties developed with NIOCONTROL™ technology. Formulated with Birch and Magnesium Salts which counteract the stagnation of excess fluids and promote a remineralizing and detoxifying action.

SPECIFICATION:
4 envelopes

inside each envelope: 2 bandages 10 cm x 10 m in extension

Cod. ARO102010



03. ATTACK

PROFESSIONAL

ADIPOSITY

.320 LIPOFIT

.325 LIPOLYTIC PLUS

CELLULITE

.330 FIBROCEL⁺

.307 CELLULITE PLUS

.306 CEL TERM

.334 LIPO REDUCE

FIRMING

.340 ACTIVE UP

.345 TONING PLUS

.316 CRIO TONIC

.343 UP&TONE



.320 LIPOFIT

Program to treat
localized adiposity

☀️ warm-cold effect

Professional treatment created to combat and treat localized adiposity on the abdomen and related imperfections. Thanks to the synergy of its components, it promotes the reduction of localized fat deposits on the stomach and hips, reactivating the skin microcirculation, improving the elasticity of the skin tissues and thus favoring the redefinition of the silhouette.

SPECIFICATIONS:
4 treatments

Cod. ARO101013



.325 LIPOLYTIC PLUS

Intensive reducing cream

☀️ warm effect

Cosmetic treatment with DRONE™ technology, ideal for treating localized adiposity, reshape the waist and the areabelly-hips. The presence of an innovative vehicle system of active ingredients, the COSMETIC DRONE™, highly specific and selective, it ensures targeted and effective action in counteracting imperfections and localized adiposity.

SPECIFICATIONS:
500 ml

Cod. ARO201104



.330 FIBROCEL+

Program to treat fibrous
and sclerotic cellulite

Professional program with dual activity, lipolytic and collagenolytic, specifically developed to counteract skin blemishes due to the more advanced stages of cellulite. It contrasts the "orange peel" appearance, reduces the visibility of subcutaneous nodules, improves skin elasticity and tone.

SPECIFICATIONS:
4 treatments

Cod. ARO101011



.307 CELLULITE PLUS

Intensive slimming cream

Intensive professional slimming and anti-water retention cosmetic treatment. It contains the innovative SLIM COMPLEX that helps improve skin circulation and Caffeine with a lipolytic action that facilitates the destocking and melting of fats.

SPECIFICATIONS:
500 ml

Cod. ARO201105



.306 CEL TERM

Cosmetic treatment
for cellulite skin blemishes

☀️ warm effect

Thermoactive cosmetic treatment indicated for the most advanced stages of cellulite. It helps to counteract the stagnation of liquids and toxins.

SPECIFICATIONS:
4 envelopes
inside each envelope: 2 bandages 10 cm x 10 m in extension

Cod. ARO102003



.334 LIPO REDUCE

Lipo-reducing bandage

Pre-soaked bandage with a marked lipolytic action. Its formula contains an innovative liposomal delivery system which encapsulates Phosphatidylcholine which, thanks to its properties, is able to dissolve fat by reducing the size of adipocytes.

SPECIFICATIONS:
4 envelopes
inside each envelope: 2 bandages 10 cm x 10 m in extension

Cod. ARO102011



.340 ACTIVE UP

Program to treat the loss of tone



fresh effect

Professional firming and toning treatment; also suitable for improving the appearance of recently formed stretch marks. Enhanced with the special Architekt Define Technology which combats the effects of gravity by restructuring the elastic fibres, stimulates the synthesis of new collagen and improves the skin's natural hydration system, making it more compact, toned and firm.

SPECIFICATIONS:

4 treatments

Cod. ARO101014



.345 TONING PLUS

Cream with firming and elasticizing effect

Rich massage cream with a firming and elasticising effect developed with Architekt Define Technology which combats the effects of gravity by restructuring the elastic fibres, stimulates the synthesis of new collagen and improves the skin's natural hydration system, making it more compact, toned and firm.

SPECIFICATIONS:

500 ml

Cod. ARO201112



.316 CRIO TONIC

Body toning cosmetic treatment



cold effect

Toning and refreshing cosmetic treatment rich in Centella Asiatica, Ginseng and Menthol which perform a vasoprotective, toning, soothing and anti-fatigue action. Thanks to the intense fresh sensation it gives, it is also ideal for treating heavy legs during the summer.

SPECIFICATIONS:

4 envelopes

inside each envelope: 2 bandages 10 cm x 10 m in extension

Cod. ARO102005



.343 UP&TONE

Bandage with firming and elasticising effect

Cosmetic treatment with a firming and elasticising effect developed with Architekt Define Technology which combats the effects of gravity by restructuring the elastic fibres, stimulates the synthesis of new collagen and improves the skin's natural hydration system, making it more compact, toned and firm.

SPECIFICATIONS:

4 envelopes

inside each envelope: 2 bandages 10 cm x 10 m in extension

Cod. ARO102013



BOOST

RETAIL

PEELING

BRUSH

.510 PEELING

.517 SUGARGEL SCRUB

DRAINING

.500 PRESSOPANTS

.501 NIO DRAIN

.502 NIO DRAIN BIO SHOCK

.520 NIO DRAIN PANTS

LIPOLYTIC

.503 BODYSLIM

.504 LIPOLYTIC

LIPO BIO SHOCK

CELLULITE

.508 CELL REPAIR

.515 CELLULITE

.516 CELLUNIGHT

.521 SILHOUETTE PANTS

NOURISHING & TONING

.509 BODY LIFT

.511 STRETCH MARKS

.513 BREAST & DÉCOLLETÉ

.514 TEXTURE

.518 B-TONE

.522 UP&TONE PANTS



**BRUSH
WITH HANDLE**

The bristles of this brush derive from a vegetable fiber called "Tampico" extracted from "Agave Lechuguilla" (also called "Ixtle"), a succulent plant that grows spontaneously in the desert areas of Northern Mexico.

Cod. ARO900002



**.510
PEELING**
Enzymatic emulsion

Energizing body peeling spray rich in fruit enzymes that gently exfoliate the skin giving it softness and a radiant appearance. Extremely delicate and superficial, it is suitable for daily use, for progressive exfoliation. Optimizes the effectiveness of the creams from the Boost/Body line.

SPECIFICATIONS:
120 ml

Cod. ARO202101



**.517
SUGARGEL
SCRUB**
Gel-oil scrub

Innovative exfoliating face and body gel scrub that turns into oil with a light massage in the first application phase and then into milk by mixing it with water. A surprising texture that combines the exfoliating property of sugar with the nourishing and emollient power of Avocado and Sweet Almond Oils and the freshness of a moisturizing milk.

SPECIFICATIONS:
200 ml

Cod. ARO202127



**.500
PRESSOPANTS**
Leggings in Bio-Infrared
Dermofibra®

Leggings in Dermofibra® BIO INFRARED with draining and push-up effect.

S Cod. ARO121001
M Cod. ARO121002
L Cod. ARO121003
XL/XXL Cod. ARO121004
PACK N.9 Cod. ARO121005
(n.2 S, n.3 M, n.3 L, n.1 XL/XXL)



**.501
NIO DRAIN**
Intensive draining gel cream

Lightweight and non-greasy gel formulated with specific active ingredients, with draining and vasotonic properties, which help improve microcirculation and promote the drainage of excess fluids. Thanks to NIOCONTROL™ technology, it makes the functional principles contained better and gradually available, for an optimal result.

SPECIFICATIONS:
200 ml

Cod. ARO202131



**.502
NIO DRAIN
BIO SHOCK**
Draining and push-up
action pack

Home treatment specially designed to drain and rebalance body fluids thanks to the combined use of Dermofibra® BIO INFRARED leggings with a draining and push-up effect and the Drain gel cream.

SPECIFICATIONS:
1 PRESSOPANTS +
1 501 NIO DRAIN 200 ml

S Cod. ARO121014
M Cod. ARO121015
L Cod. ARO121016
XL/XXL Cod. ARO121017



**.520
NIO DRAIN PANTS**
Pre-soaked draining pants

Cosmetic treatment with important draining properties, developed with NIOCONTROL™ technology that gradually makes the functional principles contained better available. Formulated with Birch and Dead Sea Salts, it combats the stagnation of excess liquids and promote a remineralising and detoxifying action.

S/M Cod.ARO110001
L/XL Cod.ARO110002 REFILL Cod.ARO110003



**.503
BODYSLIM**
Body in Bio-Infrared Dermofibra®

Body made of Dermofibra® Bio-Infrared yarn with a slimming and reshaping effect.

BLACK COLOR ●
S/M Cod. ARO131001
M/L Cod. ARO131002
L/XL Cod. ARO131003
XL/XXL Cod. ARO131004
PACK N.9 Cod. ARO131005
(n.2 S/M, n.3 M/L, n.3 L/XL, n.1 XXL)

● NUDE COLOR
S/M Cod. ARO131014
M/L Cod. ARO131015
L/XL Cod. ARO131016



**.504
LIPOLYTIC**
Intensive reducing cream

☀ warm effect

Cosmetic treatment with DRONE™ technology, ideal for treating localized adiposity, reshaping the waist and belly-hips area. The presence of an innovative system for the delivery of active ingredients, the highly specific and selective COSMETIC DRONE™, ensures a targeted and effective action in counteracting imperfections and localized adiposity.

SPECIFICATIONS: Cod. ARO202116
200 ml



LIPO BIO SHOCK
Slimming action
and fat reduction pack

☀ warm effect

Home treatment designed to counteract localized fat deposits and reduce fat accumulations in the belly-hips area thanks to the synergistic use of the body in Dermofibra® BIO INFRARED with a slimming effect and the Lipolytic cream.

SPECIFICATIONS: S/M Cod. ARO131007
1 BODYSLIM + Cod. ARO131008
L/XL Cod. ARO131009
XL/XXL Cod. ARO131010



**.508
CELL REPAIR**
Remodeling dry oil

Oil enriched with Hazelnut and Argan oil with regenerating properties and antioxidants. Ideal solution to improve the integrity of the skin and slow down the aging process. It also has a positive effect on skin microcirculation and, thanks to the seaweed extract, it helps to improve the imperfections caused by cellulite.

SPECIFICATIONS: Cod. ARO202001
100 ml



**.515
CELLULITE**
Intensive slimming cream

Intensive slimming and anti-water cosmetic treatment designed to counteract the imperfections of cellulite. Contains the innovative SLIM COMPLEX which helps improve skin circulation and Caffeine with a lipolytic action which facilitates the destocking and melting of fats.

SPECIFICATIONS: Cod. ARO202118
200 ml



**.516
CELLNIGHT**
Slimming night treatment

Intensive treatment against skin blemishes related to advanced cellulite. A targeted formula based on NOCTURSHAPE™, a biotechnological active ingredient of marine origin tested for its effectiveness in counteracting nocturnin, the protein responsible for the accumulation of fat during the night.

SPECIFICATIONS:
200 ml

Cod. ARO202133



**.521
SILHOUETTE PANTS**
Pre-soaked pants for advanced cellulite imperfections

Cosmetic treatment formulated to act against the imperfections caused by cellulite, even at an advanced level. Its formula contains an innovative delivery system that encapsulates Phosphatidylcholine which, thanks to its properties, is able to dissolve fat by reducing the size of adipocytes.

**S/M
L/XL**

**Cod.ARO110004
Cod.ARO110005**

REFILL Cod.ARO110006



**.509
BODY LIFT**
Firming dry oil

Precious oil enriched with Chia oil and Monoi from Tahiti with firming and toning properties; it immediately improves the appearance of the skin, making it soft and smooth. Its "dry touch" composition makes it quickly and easily absorbed.

SPECIFICATIONS:
100 ml

Cod. ARO202002



**.511
STRETCH MARKS**
Cream with repairing action

It stimulates cell regeneration and promotes a recompacting action, preventing the formation of new stretch marks. Improves the tone and elasticity of the skin; ideal for helping to improve the appearance of stretch marks created by pregnancy, breastfeeding, obesity, sudden weight loss.

SPECIFICATIONS:
200 ml

Cod. ARO202103



**.513
BREAST
& DÉCOLLETÉ**
Reintegrating gel

A gentle treatment for the breast and décolleté area that shows loss of firmness and firmness. Contains special botanical extracts that work in synergy to give a more compact and toned skin.

SPECIFICATIONS:
100 ml

Cod. ARO202105



**.514
TEXTURE**
Nourishing and renewing body cream

Rich emulsion with nourishing and elasticizing action: it evens and moisturizes the skin of the body, exerting a delicate superficial exfoliation. Constant use visibly improves the appearance of the skin, making it smooth, soft and intensely nourished.

SPECIFICATIONS:
200 ml

Cod. ARO202107



**.518
B-TONE**
Biphasic serum with
restructuring effect

The upper oily phase counteracts the appearance of stretch marks and deeply nourishes the skin, the lower water phase stimulates the synthesis of new collagen and improves the skin's natural hydration.

SPECIFICATIONS: 100 ml	Cod. ARO202003
----------------------------------	-----------------------



**.522
UP&TONE PANTS**
Pre-soaked pants with firming
and elasticising effect

 fresh effect

Cosmetic home treatment with a firming and elasticising effect developed with Architekt Define Technology which combats the effects of gravity by restructuring the elastic fibres, stimulates the synthesis of new collagen and improves the skin's natural hydration system.

S/M L/XL	Cod.ARO110007 Cod.ARO110008	REFILL Cod.ARO110009
---------------------	--	-----------------------------



BODY BRUSH

Brush for applying body products

Cod. ART001169



APPLICATION SET

Plastic bowl with special body brush useful for applying specific products during body treatments.

SPECIFICATIONS:
1 bowl + 1 body brush

Cod. ARO900021



CARTENE PANTS MONO USE

Disposable cartene pants to be used in combination with pressotherapy and bandages.

Cod. ARO900003



CARTENE ROLL MONO USE

Disposable cartene sheets for use during Waveshape and bandage treatments.

SPECIFICATIONS:
170x200 cm

Cod. ARO900016



CARTENE TOTAL BODY MONO USE

Disposable total body suit in cartene to be used in combination with pressotherapy and bandages.

Cod. ARO900008



BODY TOWEL

SPECIFICATIONS:
100x210 cm
100x180 cm

Cod. ART001191
Cod. ART001192





FACE





CLIENT DATA SHEET

The client data sheet is the essential tool to keep track of all the information about the client and the treatments done.

SPECIFICATIONS:
A4 format

Cod. ART001195



FACE SKIN ANALYSIS POSTER

The client data sheet is the essential tool to keep track of all the information about the client and the treatments done.

SPECIFICATIONS:
Size: 100x70 cm

Cod. ART001082



**MANDELIC ACID
30% & POST PEEL
NEUTRALIZER**
 $1.8 \leq \text{pH} \leq 2.2$

Superficial peeling indicated in anti-aging and pigmentation uniforming treatments. This peeling gives immediate radiance to the face. It has high skin tolerability. The Post Peel Neutralizer must always be used in combination.

SPECIFICATIONS:
50 ml + 50 ml

Cod. ARO405003



**LACTIC ACID 30%
& POST PEEL
NEUTRALIZER**
 $1.8 \leq \text{pH} \leq 2.2$

Ideal for mature, thin and dry skin, it gives immediate hydration and radiance. Suitable for sensitive skin. The Post Peel Neutralizer must always be used in combination.

SPECIFICATIONS:
50 ml + 50 ml

Cod. ARO405004



**GLYCOLIC ACID
35% & POST PEEL
NEUTRALIZER**
 $1.8 \leq \text{pH} \leq 2.2$

It stimulates cell regeneration by removing the stratum corneum, unifies the complexion and reduces wrinkles and discoloration. The Post Peel Neutralizer must always be used in combination.

SPECIFICATIONS:
50 ml + 50 ml

Cod. ARO405002



**WHITENING PEEL
COMPLEX & POST
PEEL NEUTRALIZER**
 $1.8 \leq \text{pH} \leq 2.2$

Suitable for treating dark spots, hyperpigmentation and melasma. It performs an important exfoliating action. Suitable for mature and dry skin. The Post Peel Neutralizer must always be used in combination.

SPECIFICATIONS:
50 ml + 50 ml

Cod. ARO405005



.150 PURITY

Purifying and exfoliating treatment

Professional treatment that exfoliates the epidermis, stimulates skin microcirculation and oxygenates the tissues for a skin that is deeply purified, renewed and ready to receive subsequent treatments.

SPECIFICATIONS:
10 treatments

Cod. ARO205015



.153 CLEANSING CREAM

Nourishing cleansing cream

Cream with a delicate cleansing and make-up remover action that eliminates all impurities respecting the skin's hydrolipidic film. Its soft and light texture is enriched with nourishing and emollient vegetable oils and butters for a hydrated and silky skin.

SPECIFICATIONS:
500 ml

Cod. ARO205016



.154 TONIC LOTION

Tonic lotion

Toning lotion that cleanses, refreshes and tones the skin by degreasing it in depth. Free of alcohol and ethoxylates.

SPECIFICATIONS:
500 ml

Cod. ARO205017



.155 PURE CLEANSE PRIMER

Purifying and regenerating primer

Professional primer for preparing and cleansing the skin. Its gel formula is designed to deeply cleanse, gently exfoliate the skin and minimize the size of pores.

SPECIFICATIONS:
100 ml

Cod. ARO205019



.158 PURIFY BC MASK

Exfoliating and purifying mask
made in 100% Pure Biocellulose
Fibers

Mask made of pure biocellulose fibers, based on next-generation exfoliating molecules that gently help remove dead skin cells. Thanks to its blend of active ingredients, it promotes the absorption of excess sebum and improves the appearance of enlarged pores.

SPECIFICATIONS:
20 ml

Cod. ARO502520



.250 RE-HYDRA

Hydrating and rebalancing treatment

Inspired by the art of Saho, the ancient Japanese beauty ritual, this professional treatment works with a double mechanism of action: from the inside it reinforces the barrier function and promotes the generation of NMF (natural hydration factor of the skin), from the outside it creates a protective film which reduces the evaporation of water.

SPECIFICATIONS:
10 treatments

Cod. ARO205018



.254 EXTRA NOURISHING RICH

Deeply nourishing and hydrating cream

Rich emulsion specially designed to restore the optimal conditions of the hydrolipidic film: an essential treatment to give the most demanding skins everything they need, reducing the sensation of tight skin.

SPECIFICATIONS:
100 ml

Cod. ARO205012



.255 EXTRA NOURISHING LIGHT

Nourishing and hydrating cream

High nourishing and moisturizing power cream, ideal for restoring the correct level of lipids and moisturizing factors in the skin. It also has a powerful antioxidant action and therefore prevents aging. Ideal for combination and oily skin.

SPECIFICATIONS:
100 ml

Cod. ARO205014



.256 REGENERIST

Light comforting face cream

Calming cream with Moringa Butter, Rhamnosoft® and Chamomile ideal for restoring the natural appearance of the skin in case of face and body treatments that generate skin redness, irritation (peeling, hair removal, laser); also perfect as a soothing treatment after sun exposure.

SPECIFICATIONS:
100 ml

Cod. ARO205013



.259 RESTORE PROBIOTIC BC MASK

Soothing and Restorative Mask in 100% Pure Biocellulose Fibres

Mask made of pure biocellulose fibres, enriched with a blend of specific ingredients designed to counteract skin discomfort while providing a soothing and restorative effect. Its formula includes an innovative "probiotic-like" ingredient that creates a protective film on the skin, helping to restore its optimal condition.

SPECIFICATIONS:
20 ml

Cod. ARO502521



.350 X-AGE SUPREME

Anti-aging program: repair, restructure, renew

Professional treatment specifically developed to counter the imperfections associated with the more advanced stages of ageing. It acts by improving skin texture and promoting cell renewal and provides deep nourishment and lasting hydration, visibly reducing wrinkles and expression lines.

SPECIFICATIONS:
4 treatments

Cod. ARO205020



.350 X-AGE SUPREME PREMIUM

Anti-aging program: repair, restructure, renew

Professional treatment specifically developed to counter the imperfections associated with the more advanced stages of ageing. It acts by improving skin texture and promoting cell renewal and provides deep nourishment and lasting hydration, visibly reducing wrinkles and expression lines.

SPECIFICATIONS:
4 treatments

Cod. ARO205021



.353 X-AGE SUPREME BC MASK

Anti-aging mask in 100% Pure Biocellulose Fibers

Pure biocellulose mask formulated with the new EctoComplex-3 technology, which combines actions on regeneration, antioxidant protection, and improvement of skin tone. Its formula is also enriched with innovative peptides that combat the signs of aging and an exclusive ingredient that counters the formation of advanced Glycation Endproducts.

SPECIFICATIONS:
20 ml

Cod. ARO502522



.354 X-AGE SUPREME CREAM

Anti-aging restructuring mask

Formulated with the new EctoComplex-3 technology with a combined action on skin regeneration, antioxidant protection and improved skin tone. Enriched with precious Butters and Oils and latest-generation Peptides, for an intensive treatment that helps restore the quality and optimal properties of the skin.

SPECIFICATIONS:
100 ml

Cod. ARO205022



BOOST

RETAIL

CLEANSING

.700 B-CLEAN
.701 SKIN AFFINITY
.708 PURIFY MASK

HYDRATING & NOURISHING

.702 HYDRA ESSENCE
.703 HYDRA SERUM
.704 HYDRA CREAM
.705 EXTRA NOURISHING TEXTURE RICH
.706 EXTRA NOURISHING TEXTURE LIGHT
RESTORE KIT
.709 RESTORE PROBIOTIC MASK
.711 HYDRALIPID inFUSION

ANTI - AGING

.712 REVITAL GLOW MASK
.713 X-AGE SUPREME MASK
.714 X-AGE SUPREME RICH SERUM
.715 X-AGE SUPREME RICH CREAM
.716 X-AGE SUPREME RICH CREAM NIGHT
.717 X-AGE SUPREME LIGHT SERUM
.718 X-AGE SUPREME LIGHT CREAM
.719 X-AGE SUPREME LIGHT CREAM NIGHT
VITAMINIC INFUSION
EYE PATCH
EYE DUO PACK

PROTECTION

.707 SUN MIST SPF 50+



**.700
B-CLEAN**
Gentle biphasic lotion

Eye and lip make-up remover that combines an aqueous phase, that is suitable for cleansing and removing impurities and smog residues, with an oily phase capable of eliminating even the most resistant and waterproof make-up.

SPECIFICATIONS:
100 ml

Cod. ARO205620



**.701
SKIN AFFINITY**
Restorative cleansing oil

Face oil that cleanses by "affinity" to give back to the skin only what it needs to be healthy and to do not alterate the lipidic balance.

SPECIFICATIONS:
100 ml

Cod. ARO205611



**.708
PURIFY MASK**
Exfoliating and purifying mask
made in 100% Pure Biocellulose
Fibers

Mask made of pure biocellulose fibers, based on next-generation exfoliating molecules that gently help remove dead skin cells. Thanks to its blend of active ingredients, it promotes the absorption of excess sebum and improves the appearance of enlarged pores.

SPECIFICATIONS:
50 ml

Cod. ARO502120



**.702
HYDRA ESSENCE**
Hydrating and soothing lotion

Silky, ultra-light fluid designed to restore the skin's optimal balance and amplify the benefits of the serum and cream applied subsequently. Enhanced with the new 3Daquactive technology that improves skin hydration and helps retain moisture.

SPECIFICATIONS:
50 ml

Cod. ARO205622



**.703
HYDRA SERUM**
Hydrating and restorative booster

Concentrated serum developed with 3Daquactive technology and Betaglukan which work synergistically to support and enhance skin's moisture balance, promote the restoration of the hydrolipidic film, improve skin elasticity, and stimulate natural epidermal repair mechanisms

SPECIFICATIONS:
30 ml

Cod. ARO205623



**.704
HYDRA CREAM**
Hydrating gel cream

Face gel cream with a "sorbet" texture developed using 3Daquactive technology which helps strengthen the skin barrier and maintain optimal skin hydration. It is enriched with vitamins PP and E, known for their high antioxidant power, and enhanced with Camellia Oil, which has emollient and protective properties.

SPECIFICATIONS:
50 ml

Cod. ARO205624



.705
**EXTRA NOURISHING
TEXTURE RICH**
Deeply nourishing and hydrating
cream | dry skin

Rich emulsion specially designed to help restore the optimal conditions of the hydrolipidic film: an essential treatment to give the most demanding skins everything they need, reducing the sensation of tight skin. Ideal for dry skin.

SPECIFICATIONS:
50 ml

Cod. ARO205608



.706
**EXTRA NOURISHING
TEXTURE LIGHT**
Nourishing and hydrating cream |
mixed and oily skin

Face cream with high nourishing and moisturizing power, ideal for restoring the correct level of lipids and moisturizing factors in the skin. It also has a powerful antioxidant action and therefore prevents aging. Ideal for combination and oily skin.

SPECIFICATIONS:
50 ml

Cod. ARO205609



RESTORE KIT
One week intensive treatment for
the restoration and protection of
the cutaneous barrier

The kit contains the 15 ml format of Skin Affinity Cleansing Oil and Extra Nourishing Cream, the perfect couple to restore the skin barrier. A must have after a peeling treatment.

SPECIFICATIONS:
15 ml + 15 ml

Cod. ARO205607



.709
**RESTORE PROBIOTIC
MASK**
Soothing and Restorative Mask in
100% Pure Biocellulose Fibres

Mask made of pure biocellulose fibres, enriched with a blend of specific ingredients designed to counteract skin discomfort while providing a soothing and restorative effect. Its formula includes an innovative "probiotic-like" ingredient that creates a protective film on the skin, helping to restore its optimal condition.

SPECIFICATIONS:
20 ml

Cod. ARO502121



.711
HYDRALIPID inFUSION
Moisturizing & nourishing
face ampoule

Precious two-phase ampoule with a double moisturizing and nourishing action.

SPECIFICATIONS:
Pack 5 pcs x 2ml

Cod. ARO302004



.712
REVITAL GLOW MASK
Pure Fibre Mask 100%
biocellulose with an illuminating
and smoothing

Pure biocellulose mask formulated with a mix of functional substances that act synergistically revitalize dull and tired skin, dull skin giving it a more youthful and radiant appearance. Its formula, enriched with hyaluronic acid, improves skin hydration, leaving the skin soft and supple.

SPECIFICATIONS:
20 ml

Cod. ARO502123



**.713
X-AGE SUPREME
MASK**

Anti-aging mask in 100% Pure
Biocellulose Fibers

Pure biocellulose mask formulated with the new EctoComplex-3 technology, which combines actions on regeneration, antioxidant protection, and improvement of skin tone. Its formula is also enriched with innovative peptides that combat the signs of aging and an exclusive ingredient that counters the formation of advanced Glycation Endproducts.

SPECIFICATIONS:
20 ml

Cod. ARO502122



**.714
X-AGE SUPREME
RICH SERUM**

Anti-aging serum | dry skin

Fluid emulsion serum developed with EctoComplex-3 technology with a combined action on skin regeneration, antioxidant protection and improved skin tone. Its advanced formula is enriched with Phytoproteoglycans and Organic Silicon, which stimulate collagen synthesis and strengthen the skin structure.

SPECIFICATIONS:
30 ml

Cod. ARO205632



**.715
X-AGE SUPREME
RICH CREAM**

Renewing cream | dry skin

Rich emulsion with EctoComplex-3 technology, which acts in synergy on skin regeneration, antioxidant protection and improved tone. The nourishing texture, enriched with emollient vegetable oils and Moringa butter, is perfect for dry skin, offering deep hydration and long-lasting protection

SPECIFICATIONS:
50 ml

Cod. ARO205633



**.716
X-AGE SUPREME
RICH CREAM NIGHT**

Anti-ageing night cream | dry skin

A silky and rejuvenating night treatment to be applied overnight or as an intensive mask. Formulated with the exclusive EctoComplex-3 technology, which combines action on skin regeneration, antioxidant protection, and improved skin firmness. Perfect for dry skin, it provides lasting comfort and deep hydration.

SPECIFICATIONS:
50 ml

Cod. ARO205641



**.717
X-AGE SUPREME
LIGHT SERUM**

Anti-aging serum |
mixed and oily skin

Innovative cream-gel serum with EctoComplex-3 technology with combined action on skin regeneration, antioxidant protection and improved skin tone. Enriched with Phytoproteoglycans and Organic Silicon to boost collagen and strengthen the skin structure. The fresh and light texture is perfect for the needs of combination and oily skin.

SPECIFICATIONS:
30 ml

Cod. ARO205634



**.718
X-AGE SUPREME
LIGHT CREAM**

Renewing cream |
mixed and oily skin

Light emulsion with EctoComplex-3 technology, which promotes skin regeneration, antioxidant protection and tone. The light texture, combined with Bisabolol and Aloe Vera, with antibacterial and anti-inflammatory properties, soothes, hydrates and protects, making it ideal for combination and oily skin.

SPECIFICATIONS:
50 ml

Cod. ARO205635



.719 X-AGE SUPREME LIGHT CREAM NIGHT

Anti-ageing night cream |
mixed and oily skin

A silky and rejuvenating night treatment to be applied overnight or as an intensive mask. Formulated with the exclusive EctoComplex-3 technology, which combines action on skin regeneration, antioxidant protection, and improved skin firmness. Perfect for combination and oily skin, it provides optimal comfort and a radiant look upon waking.

SPECIFICATIONS:
50 ml

Cod. ARO205636



VITAMINIC inFUSION

Brightening & anti-oxydant
face ampoule

This ampoule gives the skin a charge of energy and an immediate radiance.

SPECIFICATIONS:
Pack 5 pcs x 2ml

Cod. ARO302001



EYE PATCH

100% Pure Biocellulose
Fiber Mask + Peptide Complex

Eye mask in pure biocellulose with immediate lifting and decongestant actions. Once applied, it adheres perfectly to the eye contour, optimally conveying the functional ingredients contained in the fluid it is soaked in.

SPECIFICATIONS:
4 pcs x 6 ml

Cod. ARO502301



EYE DUO PACK

Day&Night treatment

Exclusive intensive day & night treatment designed to combat the appearance of wrinkles, dark circles, bags and swelling of the eye area. Eye Microemulsion + Eye Serum are formulated with a cutting-edge combination of HYALURONIC ACID + BIORETINOL plumping and anti-aging and PEPTIDE COMPLEX with a draining and redensifying action.

SPECIFICATIONS:
15 ml + 15 ml

Cod. ARO205205



.707 SUN MIST SPF 50+

Vitamin E & Aloe Vera

Innovative solar formula in spray for face and body with very high protection, practical and refreshing. Contains a balanced mix of UVA / UVB and active filters that protect the skin from photo-induced damage. Formula free of petrolatum, parabens and perfumes; very resistant to water.

SPECIFICATIONS:
100 ml

Cod. ARO205612



CERAMIC
BOWL

Small ceramic bowl for face treatments.

SPECIFICATIONS:
Ø 10 cm

Cod. ARO950001



FACE
BRUSH

Cod. ARO950002



PEELING
BRUSH

Arosha brush for applying peelings.

Cod. ART001212



FACE
TOWEL

SPECIFICATIONS:
30x60 cm

Cod. ART001045



AROSHA BAND
IN TECH FABRIC

SPECIFICATIONS:
White colour

Cod. ART001176



AROSHA HAIR BAND IN
COTTON WITH VELCRO

SPECIFICATIONS:
White colour

Cod. ART001088





TECH



**LX9**

Pressomassage device

MOD-DRAINAGE SET

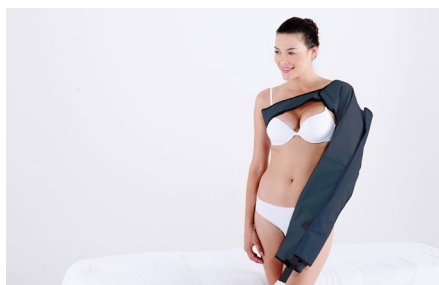
- N. 02 One touch leg cuffs (4 chambers)
- N. 01 One touch waist cuff (4 chambers)
- N. 01 Single hose
- N. 01 Double hose
- N. 01 Hose splitter
- N. 01 Black bag

Cod. ART101018

ACCESSORIES



ONE TOUCH WAIST CUFF
Cod. ART101003



ONE TOUCH ARM CUFF
Cod. ART101004



CENTER BODY CUFF & 2
EXT. ZIP & 1 DOUBLE HOSE
Cod. ART101005



ONE TOUCH LEG CUFFS (1 pair)
Cod. ART101012 - XL size
Cod. ART101006 - XXL size



ARM EXTENSION ZIPPER (1 pcs)
Cod. ART101007



LEG EXTENSION (1 pair)
Cod. ART101013 - XL size
Cod. ART101008 - XXL size



ONE TOUCH SINGLE HOSE
Cod. ART101009



ONE TOUCH DOUBLE HOSE
Cod. ART101010



ONE TOUCH DISTR. HOSE
Cod. ART101011

**MK300**

Pressomassage device

MK300L FULL SET:

- N. 02 Leg sleeves
- N. 01 Waist sleeve
- N. 01 Arm sleeve
- N. 04 Single hoses

MK300L FULL BODY:

- N. 01 Full body sleeve
- N. 03 Extension zippers
- N. 04 Single hoses

Cod. ART101601

Cod. ART101600

ACCESSORIES



1 PAIR LEG SLEEVE (1 pair)
Cod. ART101602 - L - XL size
Cod. ART101603 - XXL size



ARM SLEEVE
Cod. ART101604



WAIST SLEEVE
Cod. ART101605



FULL BODY SLEEVE
Cod. ART101606



SINGLE HOSE
Cod. ART101607



LEG EXTENSION ZIPPER (2 units)
Cod. ART101608 - XL size
Cod. ART101611 - XXL size



ARM EXTENSION ZIPPER
Cod. ART101609



WAVESHAPE 3.0

Ultrasound / micro-currents device with fixed plates

WAVESHAPE 3.0 SET

- N. 08 Ultrasound plate
- N. 01 Plexiglass plate holder
- N. 01 Elastic band l 105 cm x h 13 cm
- N. 03 Elastic band l 90 cm x h 13 cm
- N. 04 Elastic band l 60 cm x h 13 cm
- N. 16 Silicon electrode 60 x 85 mm
- N. 05 Memory card

Cod. ART431041

ACCESSORIES



SILICON ELECTRODE
60 x 85 mm - n. 16 pcs
Cod. ART431006



ULTRASOUND PLATE
(Does not work with Waveshape 2.0)
Cod. ART431021



ELASTIC BAND
Cod. ART431003 l 60 cm x h 13 cm
Cod. ART431004 l 90 cm x h 13 cm
Cod. ART431005 l 105 cm x h 13 cm



AROSHA SLIM BLANKET

Electric blanket for cosmetic use

- Heat zones: 2
- Maximum output: 250W
- Supply: 115V or 230V

SPECIFICATIONS:
m 1.54 (H) x 1.70 (L) Colour: silver

Cod. ART201001

**DERMAX**

Radiofrequency / microcurrents device

A multifunctional device designed for professional aesthetics, using microcurrents and resistive radiofrequency for non-invasive treatments of skin imperfections related to aging.

SPECIFICHE:

Dimension: 489 x 422 x 364 mm (LxPxH)

Weight: ~5 kg

Cod. ART421501**ACCESSORIES**N.1 RADIOFREQUENCY
HANDPIECE**Cod. ART421504**N. 1 WIDE HEAD
FOR RADIOFREQUENCY**Cod. ART421507**N. 1 FOCUS HEAD
FOR RADIOFREQUENCY**Cod. ART421506**N. 1 MATRIX HEAD
FOR RADIOFREQUENCY**Cod. ART421505**N. 1 MICROCURRENTS
HANDPIECE**Cod. ART421503**N.1 MATCHING
PLATE**Cod. ART421508**

CONDUCTIVE PLUS NEW - 1000 ml
CONDUCTIVE CREAM FOR DIATHERMY

Cod. ARO201111



