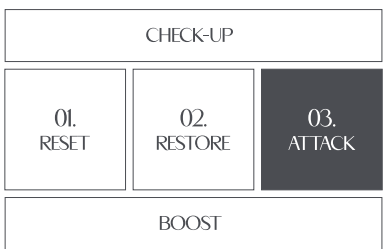




ATTACK / BODY

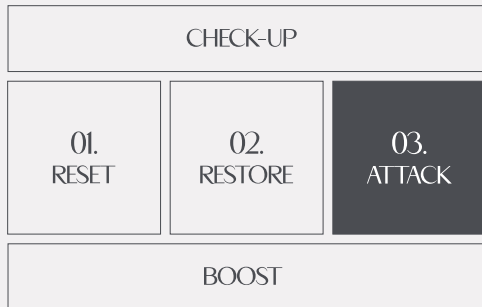
330 FIBROCEL⁺

Reveal your authentic beauty
The perfect ally for a complete remodeling and slimming treatment.



AROSHA
AESTHETIC SCIENCE

.330 FIBROCEL⁺



Included in the third and final **ATTACK** phase of the method Arosha **.330 FIBROCEL⁺** is the innovative body program to treat all stages of advanced cellulite with a single, targeted and effective solution.



Discover our method

ADVANCED CELLULITE AND FORMULATION STRATEGY

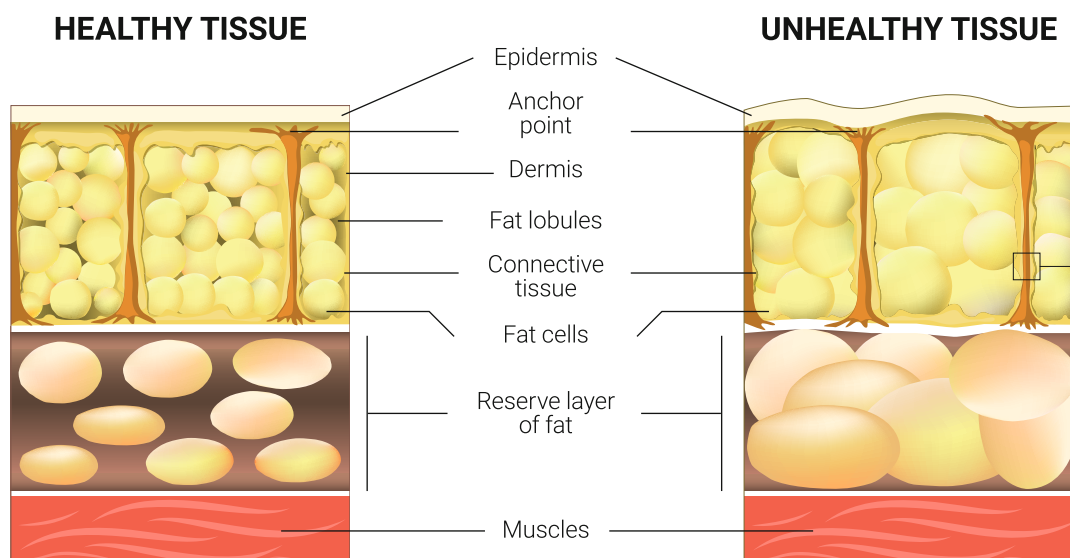
The term **advanced cellulite** commonly refers to the set of:

Fibrous cellulite, second stage, in which the reticular fibers (collagen fibers) present near the adipocytes increase in number and thickness with a consequent swelling and an initial thickening of the fibrous connective tissue. The skin appears colder to the touch and there is an initial loss of elasticity. The first micronodules begin to appear.

Nodular cellulite, third stage, characterized by further stiffening of the fibrotic bundles which compress the masses of adipocytes. A sclerosis of the connective tissue of the dermis begins and metabolic exchanges are hindered, resulting in poor oxygenation. The skin has micro and macro nodules that are painful to the touch which give it the characteristic “mattress” appearance. The affected area is flaccid, cold and discolored.

Sclerotic cellulite refers to the fourth stage of cellulite and is the end result of the irreversible degeneration of adipose tissue. The “mattress” appearance becomes very evident and the skin is pale in colour. The macronodules have reached such a size as to press on the nerve endings and generate intense pain.

To counteract the imperfections associated with these three specific stages of cellulite, Arosha creates FIBROCEL⁺, an innovative professional program with a dual lipolytic and collagenolytic activity, capable of counteracting the “orange peel” appearance, visibly reducing subcutaneous nodules, improving elasticity and skin tone.



STRATEGIC ACTIVE INGREDIENTS

COLLAGENASE

Enzyme of the metalloprotease group capable of cutting the peptide bonds present in collagen. Specifically, it intervenes in the breakdown of defective collagen fibers which, on the one hand, by compressing the fat cells lead to the formation of fibrous nodules and, on the other, by exerting traction on the skin, they cause the so-called "orange peel" effect. The result is a real restructuring of the skin and a consequent smoothing and toning effect.

CAFFEINE

One of the most effective active ingredients in body treatments thanks to its lipolytic action. It is in fact capable of promoting the degradation of the triglycerides present in the adipocytes, causing their volume reduction. It also has strong antioxidant properties.

CARNITINS

Naturally contained in the cells of our body, this substance intervenes in the cellular processes of energy production, promoting the burning of fat.

PHOSPHATIDYLCHOLINE

one of the most abundant phospholipids in tissues. Thanks to its properties it is able to dissolve fat by reducing the size of adipocytes.

GLAUCINE

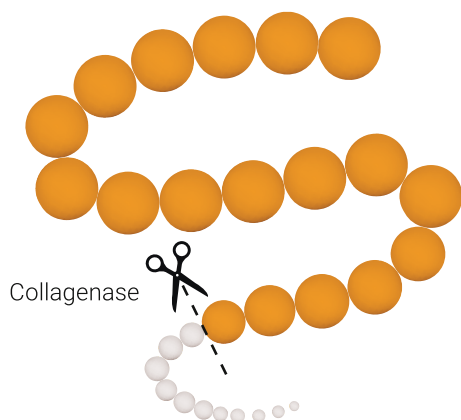
Molecule of vegetable origin that intervenes in the differentiation mechanisms of adipocytes, inducing the structural reversion of adipose tissue into fibroblastic tissue; it also increases lipolysis by inhibition of phosphodiesterases.

PROTEOLYSIS

Proteins (including collagen), like all cellular components, have a turnover which leads to their degradation. This can happen when the protein is not formed properly or when the protein is no longer needed, as in the case of defective collagen.

The process of protein degradation by the body is called PROTEOLYSIS and generally occurs through hydrolysis (breaking) of the peptide bond by enzymes called proteases (such as collagenase).

Peptide portion of defective collagen



PROFESSIONAL TREATMENT

ATTACK / BODY



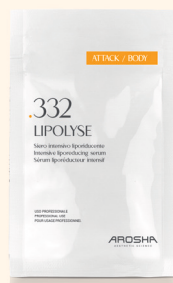
.331 COLLAGENACT

Breaks down defective collagen around fat cells

ACTIVE INGREDIENTS

Collagenase

Nr. 4 – 10 ml vial



.332 LIPOLYSE

Promotes the reduction of adipocytes and counteracts the formation of new fat cells

ACTIVE INGREDIENTS

Caffeine, Carnitine, Phosphatidylcholine

Nr. 4 – 40 ml single-dose sachet



.333 COLLAGEN REDUCE

Promotes the degradation of micro and macro nodules and improves skin laxity and tone

ACTIVE INGREDIENTS

Collagenase, Carnitine, Glaucine

Nr. 4 – 250 ml packs with 2 pre-soaked bandages (10 cm X 10 m/ each)



.334 LIPO REDUCE

Favors the conversion of fats into energy and counteracts their accumulation in adipose tissue

ACTIVE INGREDIENTS

Phosphatidylcholine, Caffeine, Carnitine

Nr. 4 – packs of 250 ml with n.2 pre-soaked bandages (10 cm X 10 m/each)

COMPLETE THE TREATMENT



.307 CELLULITE PLUS

Helps to improve skin circulation, favors the drainage of liquids, facilitates the dissolution of fats, nourishes and improves skin elasticity

ACTIVE INGREDIENTS

Slim complex, Compound of essential vegetable oils (Ginger, Turmeric and Cinnamon), Lipo-active, Caffeine, Carnitine, Shea Butter, Almond and Rice Oil

500 ml Airless

Not included in the kit



.515 CELLULITE

Helps to improve skin circulation, favors the drainage of liquids, facilitates the dissolution of fats, nourishes and improves skin elasticity

ACTIVE INGREDIENTS

Slim complex, Compound of essential vegetable oils (Ginger, Turmeric and Cinnamon), Lipo-active, Caffeine, Carnitine, Shea Butter, Almond and Rice Oil

200 ml tube

Not included in the kit



.516 CELLUNIGHT

Contrasts the accumulation of fat during the night, facilitates its dissolution and promotes the degradation of fibrous nodules

ACTIVE INGREDIENTS

NOCTURSHAPE™, Caffeine, Carnitine, Collagenase, Shea Butter, Almond and Rice Oil

200 ml tube

Not included in the kit



.521 SILHOUETTE PANTS

Dissolves fats, counteracts their accumulation in adipose tissue and promotes the degradation of fibrous nodules

ACTIVE INGREDIENTS

Phosphatidylcholine, Caffeine, Carnitine, Collagenase

Nr. 1 pants + nr. 1 refill

Not included in the kit

PROFESSIONAL TREATMENT

STEP 1 PREPARATION

↓
AROSHA BRUSH
+
.106 GLYCOLIC ACID



STEP 2 ACTIVATION

↓
.331 COLLAGENACT
+
.332 LIPOLYSE



STEP 3 SHOCK ACTION

↓
.333 COLLAGEN REDUCE
or .334 LIPO REDUCE



STEP 4 FINAL MASSAGE

↓
.307 CELLULITE PLUS



STRENGTHS



Professional program with dual activity, lipolytic and collagenolytic

DOUBLE ACTION

A single treatment capable of counteracting all stages of advanced cellulite

MAXIMUM PERFORMANCE

It can be used at any age and for all skin types, including the most sensitive

FLEXIBLE TREATMENT

It can be used at any time of the year

ATHERMAL TREATMENT

Time optimization: a few basic steps for scientifically proven results

HAND FREE

The kit contains all the products in the quantity necessary to immediately perform the complete treatment

READY TO USE

Pressomassage, infrared, electrolipolysis/ultrasound to maximize the effects of the treatment

COMBINABLE WITH TECHNOLOGIES

AROSHA
AESTHETIC SCIENCE

   AROSHA.IT