

BOOST / BODY



Ready to wear

Pull on and wear the Pants easily combining them with the plastic pants to maximise the absorption of the active ingredients.



50 DEN microfibre

This durable and skin-friendly fabric adapts perfectly to your body for maximum comfort.



Easy to use

Designed to be worn at home, offering ultimate comfort and freedom of movement, allowing effortless movement throughout all daily activities without limitations.

1+1

2 treatments included

The kit includes everything needed for two cosmetic treatments, for greater and prolonged effectiveness.



Reusable Pants

After the treatment, hand wash the Pants, store them, and reuse with the practical refill pouch.



Pre-soaked product

The Pants are pre-soaked to best absorb the active ingredients and better release them during the 30-minute treatment.



AROSHA
AESTHETIC SCIENCE



AROSHA.IT

rev 03.2025



BOOST / BODY

WEAR YOUR BEAUTY TREATMENT

Wearable draining, lipo-reductive
and toning treatments.

AROSHA
AESTHETIC SCIENCE



.520 NIO DRAIN PANTS

Pre-soaked draining pants

Cosmetic treatment with important draining properties designed with NIOCONTROL™ technology, an innovative delivery system based on Niosomes that gradually make the functional principles contained in the product better available. It is formulated with Birch and Dead Sea salts that counteract the stagnation of excess fluids and promote a remineralizing and detoxifying action. Its formula is also enriched with Centella and Eskin which stimulate the microcirculation relieving the sense of heaviness and swelling in the legs.



Intensive draining action

Watch tutorial
and discover more



.521 SILHOUETTE PANTS

Pre-soaked pants for advanced cellulite imperfections

Cosmetic treatment formulated to act against the imperfections caused by cellulite, even at an advanced level. Its formula contains an innovative delivery system that encapsulates Phosphatidylcholine which, thanks to its properties, is able to dissolve fat by reducing the size of adipocytes. Associated with Caffeine and Carnitine, it promotes the metabolism of fatty acids, counteracting their accumulation in adipose tissue. Collagenase enzyme, also, promotes the rupture of the amorphous collagen bundles which, by compressing the adipocytes, contribute to the formation of fibrous nodules.



Lipo-reducing effect

Watch tutorial
and discover more



.522 UP&TONE PANTS

Pre-soaked pants with firming and elasticising effect

Cosmetic home treatment with a firming and elasticising effect developed with Architekt Define Technology which combats the effects of gravity by restructuring the elastic fibres, stimulates the synthesis of new collagen and improves the skin's natural hydration system, making it more compact, toned and firm. Treatment with fresh effect.



Firming and elasticising effect

 Fresh effect



PERFECT MATCH



.501 NIO DRAIN

Gel cream formulated with specific active ingredients with draining and vasotonic properties that help improve microcirculation and promote the drainage of excess fluids. Thanks to NIOCONTROL™ technology, an innovative delivery system based on Niosomes, it makes the functional principles contained better and gradually available, for an optimal result. An ultra-light and comfortable texture, easy to apply and specially designed to be absorbed quickly without greasing.

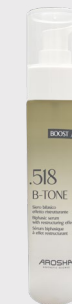


.515 CELLULITE

Intensive slimming and anti-water retention cosmetic treatment designed to counteract the imperfections of cellulite. Contains the innovative SLIM COMPLEX that helps improve skin circulation and Caffeine with a lipolytic action that facilitates the destocking and melting of fats. Also enriched with Carnitine and compounds of essential oils that promote the drainage of liquids while vegetable oils and shea butter nourish and improve the elasticity of the skin, leaving it smooth and compact.

.516 CELLUNIGHT

Intensive treatment against skin blemishes related to advanced cellulite. A targeted formula based on NOCTUR-SHAPE™, a biotechnological active ingredient of marine origin tested for its effectiveness in counteracting nocturnin, the protein responsible for the accumulation of fat during the night. It also contains Caffeine and Carnitine, known for their high lipolytic power, and the Collagenase enzyme which promote the degradation of the fibrous nodules. Applied every night, helps reduce the annoying “orange peel” skin and improves skin elasticity and tone.



.518 B-TONE

Treatment with a restructuring effect in two synergistic phases. The upper oily phase, enriched with Sweet Almond, Jojoba, Rosa Mosqueta oils and a compound of fermented oils combats the onset of stretch marks and nourishes the skin in depth, making it soft and silky. The lower aqueous phase is instead enhanced with the special Architekt Define Technology which combats the effects of gravity by restructuring the elastic fibres, stimulates the synthesis of new collagen and improves the skin's natural hydration system, making it more compact, toned and firm. Thanks to its innovative two-phase formulation, it applies easily and is quickly absorbed without leaving a greasy residue.